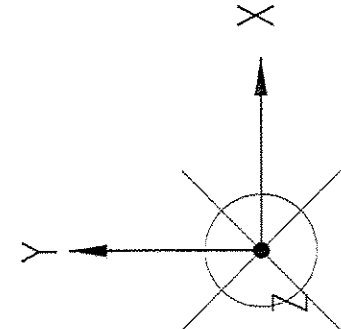
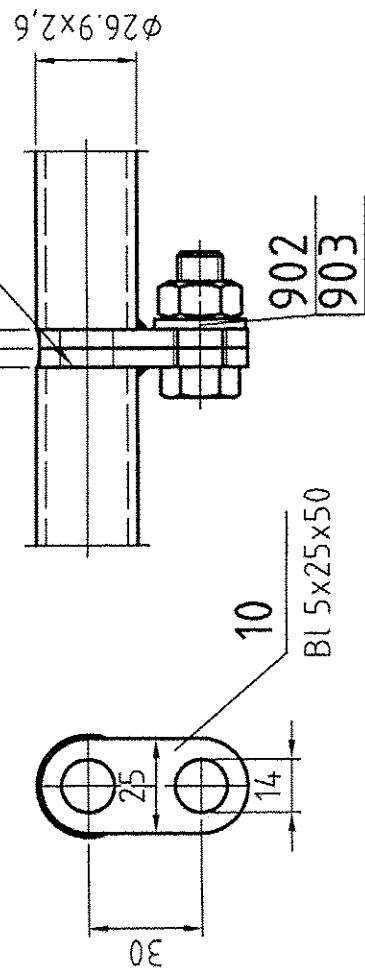
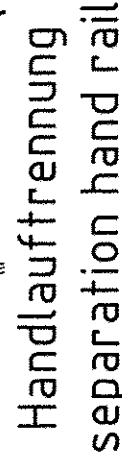
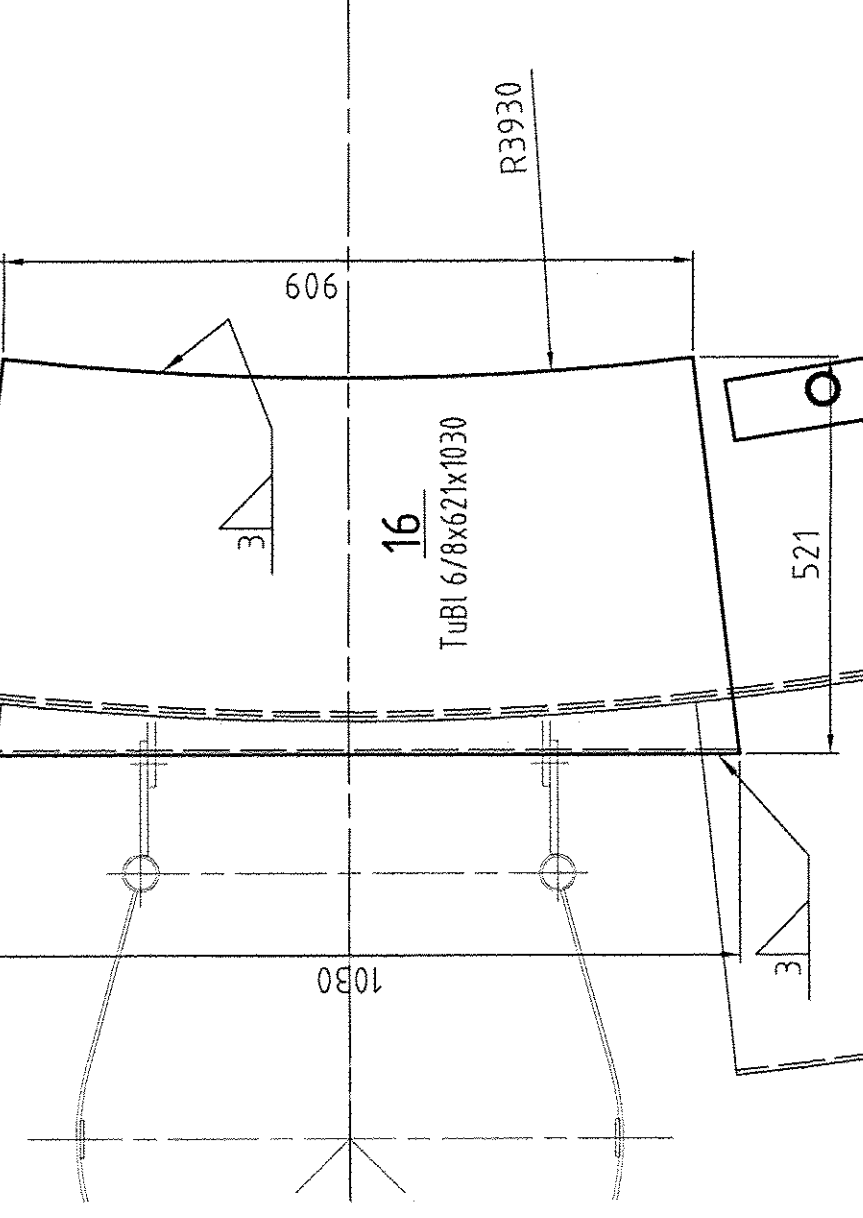
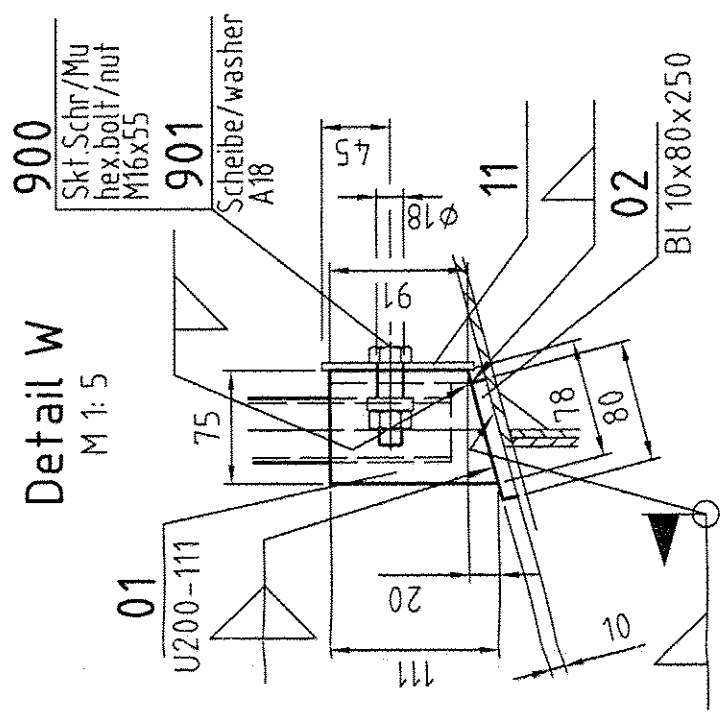
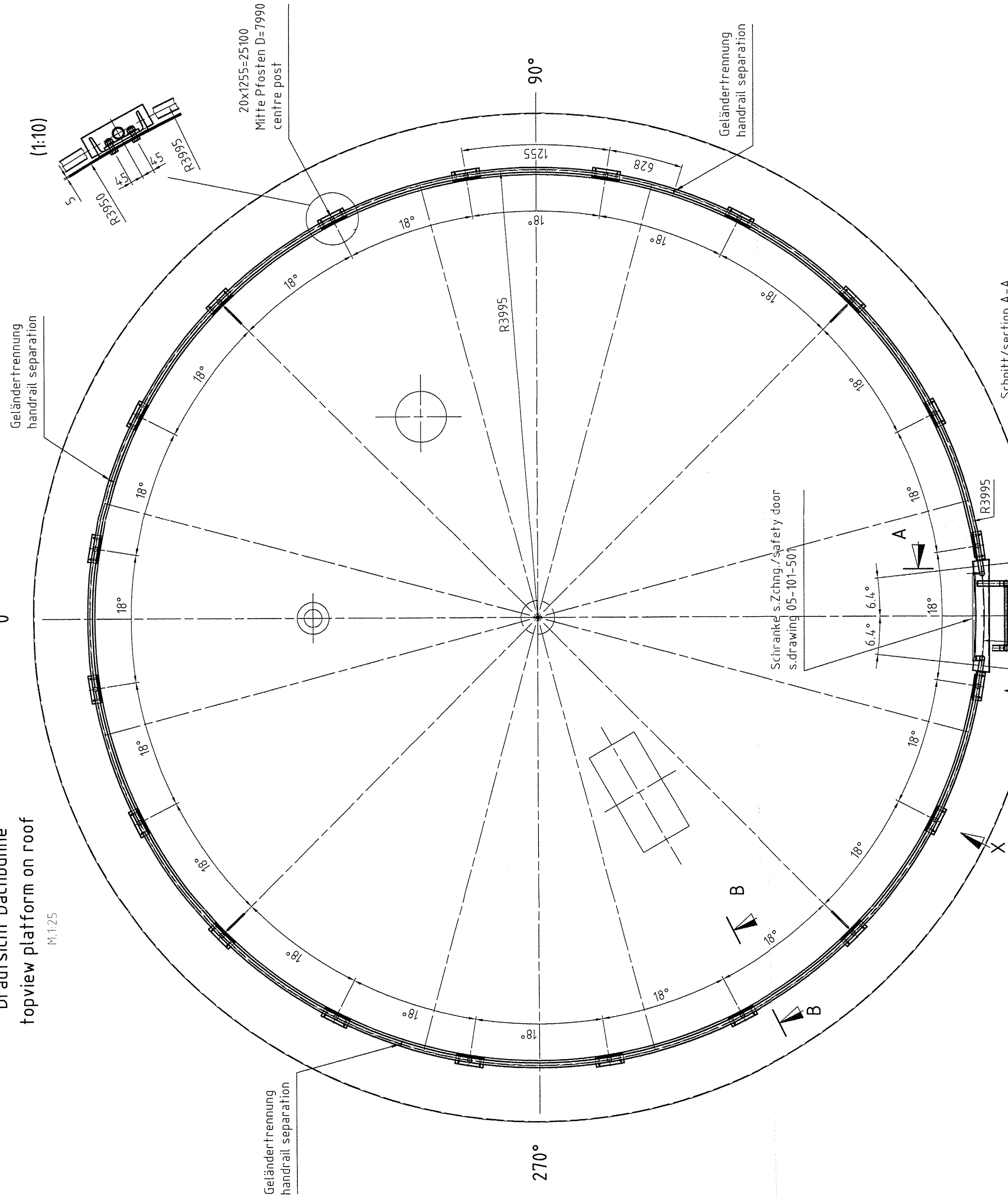


Schnitt/section B-B

Detail Y  
(aus Schnitt A-A)  
(from section A-A)

Draufsicht Dachbühne  
topview platform on roof



Oberflächenbehandlung  
Surface treatment

Bühnen, Leitern und Gitterroste:  
platforms, ladders, gratings  
- feuerverzinkt  
- hot dip galvanized

Zeichnung gehört zu: see also drawing:	05-101-500
---	------------

Die folgenden technischen Anforderungen sind einzuhalten:  
The following technical requirements are to be fulfilled:

-Allgemeintoleranzen nach DIN ISO 2768 - C

-Allgemeintoleranzen für Schweißkonstruktionen

nach EN ISO 13920 - CG  
-Schweißnahtvorbereitung nach DIN 8551 T1 und T4.

- Tragende und gasbeaufschlagte Schweißnähte sind 100% visuell zu prüfen.

- General tolerances in accordance with DIN ISO 2768 - C

- General tolerances in accordance with DIN ISO 2768 - C
- General tolerances for welded constructions in accordance

with EN ISO 13920 - CG  
- Preparation of welds in accordance with DIN 8551 part 1 and part 2.


- Preparation of welds in accordance with DIN 6931
- Supporting and gas-primed welds are checked

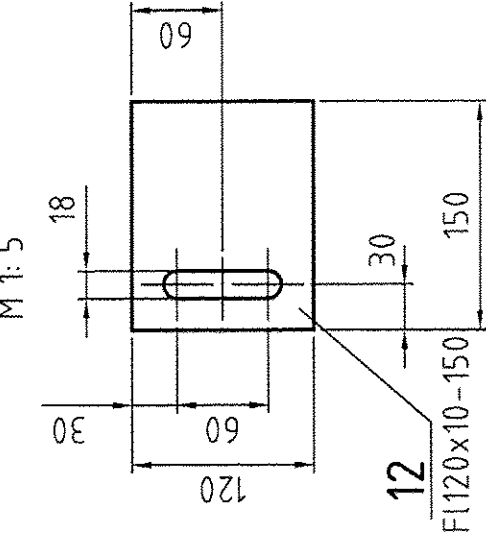
100% visual.  
-All welds without dimensions:

[illegible]

**AIR LIQUIDE** 

Air Liquide AGS GmbH

	DATE:	15. 04. 05	NAME:	Speer	CHECKED:		HISTORY FILE:	05-101-502-a-ang
	JOB CODE:	K70101 ASU No. 9 Kosice			SCALE	ORIGINAL FORMAT DN A1		
REFERENCES:				DRAWING No:	SHEET: 1			OF 1 SHEETS
REPLACES:	TITLE: Coldbox-Stages and ladders			DRAWING No:			REV.	0
REPLACED BY:	platform on the roof			05-101-502				



Pos 12

